

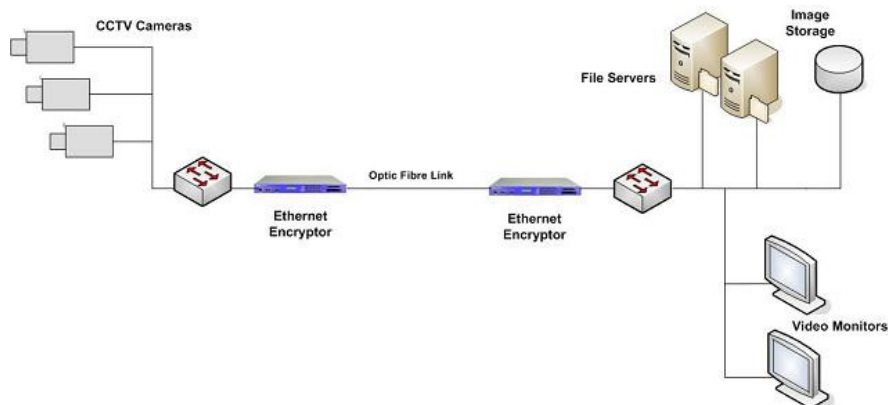
CypherNet based CCTV Encryption – Technical Data Sheet

The Senetas CCTV system is a high performance, integrated security solution providing CCTV privacy on point to point or multipoint links. The solution builds on standard Senetas CypherNet encryption technology and has been designed to integrate transparently and simply into network architectures.

CCTV users value a solution that provides scalable performance and seamless end-to-end integration within existing data networks without compromising security.

KEY FEATURES

- Full duplex speed up to 1 Gbps
- Point-Point or Multipoint operation
- IEEE802.3 conformance
- VLAN Transparency
- AES-256
- Fully Automated Key Management using X.509 certificates for authentication
- Pluggable Optical Interfaces
- Integrated Common Management Solution
- Secure Remote Management using SNMPv3 or IPsec
- Designed to International Security Standards
 - Common Criteria EAL4
 - FIPS 140-2 Level 3



Technical Specifications

Cryptography

- AES
- CTR
- 256-bit Key

Key Management

- Based on ATM Forum Security Specification V1.1
- RSA public key
- Master/Session keys
- X.509 certificates

Single Channel

- Supports one encrypted channel with an associated encryption key pair

Performance

- Full duplex operation at data rates up to 1 Gbps
- Low Latency

Access Control

- Role based
- Time of day

Audit Trail

- Date and time of connection
- Configuration changes
- Event Log

Management

- SNMPv3
- Ethernet 10/100 RJ45
- RS232 Local console

Indicators

- Two Line 20 character LCD display
- LEDs indicating status of local interface, network interface, temperature, alarm, battery status, system operation and secure status
- Power

Interfaces

- 10GBASE-SR: Short Range, 850 nm, MMF
- 10GBASE-LR: Long Range, 1310 nm, SMF
- 10GBASE-ER: Extended Range, 1550 nm, SMF

Network Protocols

- IEEE 802.3ae
- 1 GbE LAN

Physical Security

- Tamper proof storage of encryption keys and user passwords
- Tamper resistant metal case

Accreditation

- Common Criteria EAL4
- FIPS 140-2 Level 3

Environmental

- 0° to 40° C operating temperature
- 0 to 80% RH @ 40° C operating humidity
- 95% RH @ 40° C non-operating humidity

Electrical

- 48 V DC (nominal) or 110/240V AC
- 40 W maximum
- Redundant dual power supplies

Mechanical

- Height: 1U - 44 m)
- Width: 435 mm (19 inch rack mountable)
- Depth: 360 mm
- Weight: 4 kg

